

GAS MONITOR

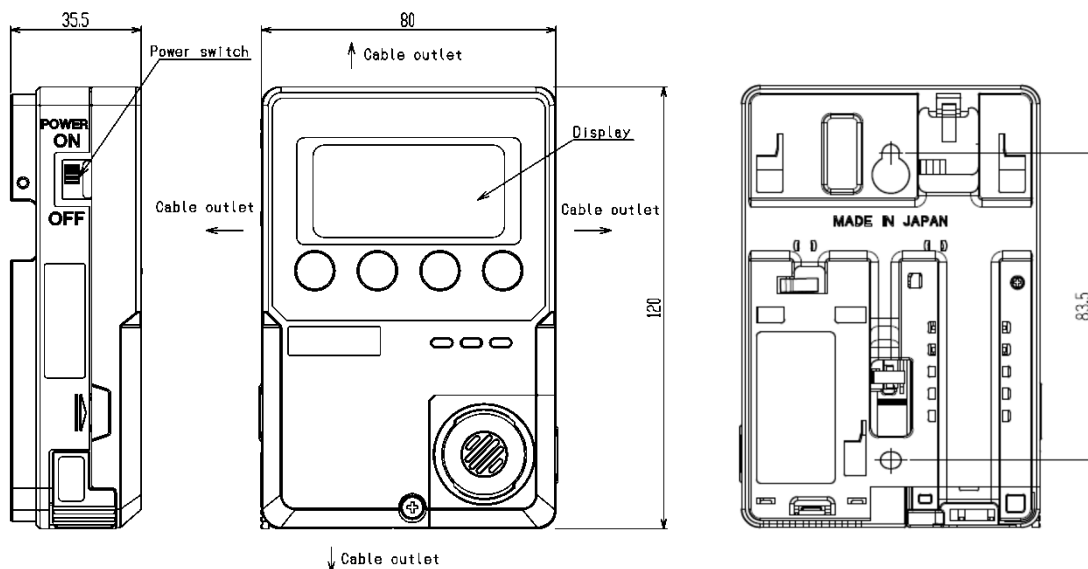
RI-600 (ppm) SPECIFICATION

Detection principle	Non-dispersive infrared absorption method
Gas to be detected	Carbon dioxide (CO ₂)
Display	LCD digital display (Five-digit, seven-segment/ green, orange and red backlight) *The backlight is off during standard setting.
Detection range [※]	0~2000ppm/0~5000ppm/0~10000ppm
Display resolution	0~2000ppm : 1ppm/2000ppm~10000ppm : 10ppm
Detection method	Diffusion type
Alarm setpoint	1000ppm(1st)/1000ppm(2nd) [Standard setting]
Indicate accuracy (under an identical condition)	Within $\pm 5\%$ F.S (For the gas density signal output)
Response time (under an identical condition)	Within 60sec(T90)
Gas alarm type	Two-step alarm (H-HH)
Gas alarm display	1st: Lights up the concentration display and backlight (orange), buzzer 2nd: Lights up the concentration display and backlight (red), buzzer *The backlight and buzzer are off during standard setting.
Gas alarm pattern	Non latching (auto-reset)
Gas alarm contact [※]	No-voltage contact 1a or 1b and normally de-energized (energized in response to an alarm)
Fault alarm/self diagnosis	System abnormalities/sensor connection abnormalities
Fault alarm display	Alarm detail display and backlight blinking (orange), buzzer *The backlight is off during standard setting.
Fault alarm pattern	Non latching (auto-reset)
Contact capacity	125VAC·1A or 30VDC·1A (Resistance load)
Transmission specifications	4~20mADC (no-insulation/load resistance under 300 Ω)
Power supply [※]	100-120VAC $\pm 10\%$ (50/60Hz) or 24VDC $\pm 10\%$
Power consumption	AC specification:Max. 6VA/DC specification:Max. 4W
Initial clear	Approx. 25 seconds
Warming-up time	Approx. 30 minutes
Operating temperatures	0~40°C (at a constant condition)
Operating humidities	Below 90%RH (Non-condensing)
Structure	Wall mounting type
Outline dimensions	Approx. 80 (W) x 120 (H) x 35.5 (D) mm (projection portions excluded)
Weight	AC specification:Approx. 200g/DC specification:Approx. 180g

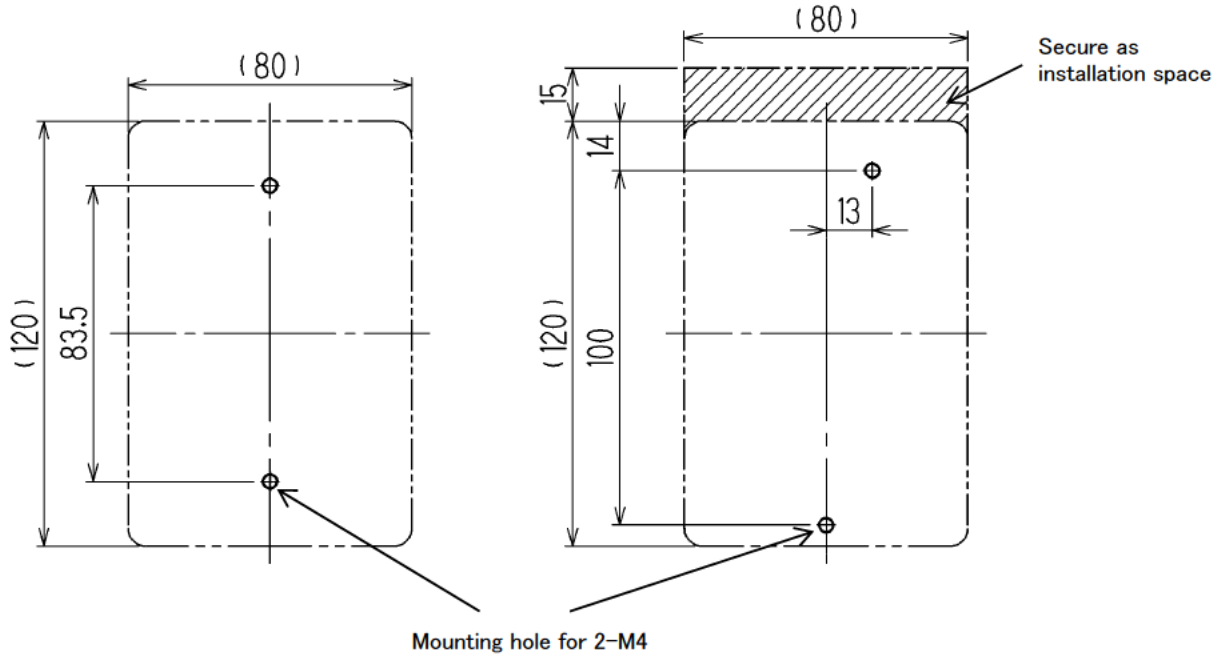
※ Please specify your request when ordering.

Outline Drawings

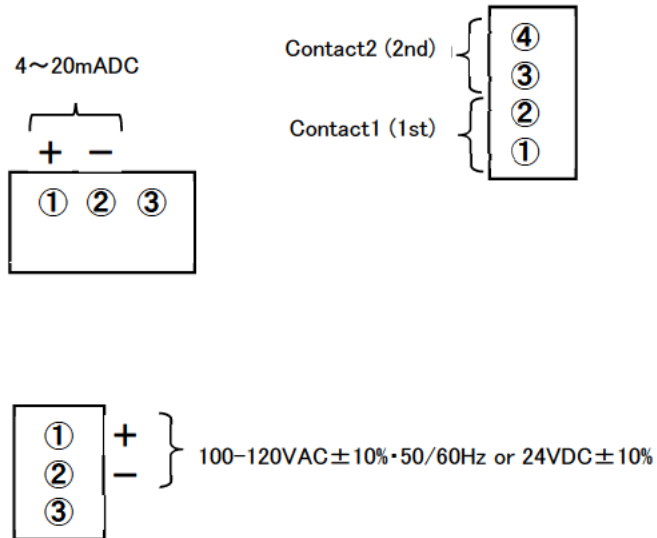
<Main body>



Installation dimension drawing



Terminal Drawings



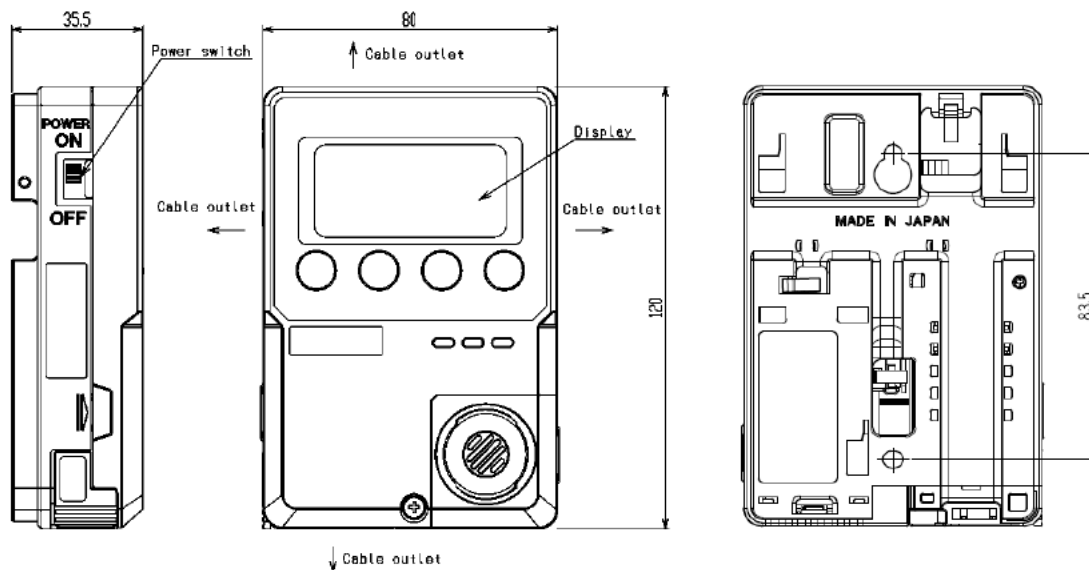
GAS MONITOR **RI-600 (vol%) SPECIFICATION**

Detection principle	Non-dispersive infrared absorption method
Gas to be detected	Carbon dioxide(CO ₂)
Display	LCD digital display(Five-digit, seven-segment / green, orange and red backlight) *The backlight is off during standard setting.
Detection range [※]	0 - 2vol% / 0 - 5vol%
Display resolution	0 - 2vol% : 0.005vol% / 2 - 5vol% : 0.010vol%
Detection method	Diffusion type
Alarm setpoint	0 - 2vol% : 1.0vol%(1st)/1.0vol%(2nd) [Standard setting] 0 - 5vol% : 2.5vol%(1st)/2.5vol%(2nd) [Standard setting]
Indicate accuracy (under an identical condition)	Within $\pm 5\%$ F.S (For the gas density signal output)
Response time (under an identical condition)	Within 60sec(T90)
Gas alarm type	Two-step alarm(H-HH)
Gas alarm display	1st: Lights up the concentration display and backlight(orange), buzzer 2nd: Lights up the concentration display and backlight(red), buzzer *The backlight and buzzer are off during standard setting.
Gas alarm pattern	Non latching(auto-reset)
Gas alarm contact [※]	No-voltage contact 1a or 1b and normally de-energized(energized in response to an alarm)
Fault alarm/self diagnosis	System abnormalities/sensor connection abnormalities
Fault alarm display	Alarm detail display and backlight blinking(orange), buzzer *The backlight is off during standard setting.
Fault alarm pattern	Non latching(auto-reset)
Contact capacity	125VAC·1A or 30VDC·1A(Resistance load)
Transmission specifications	4 - 20mADC(no-insulation/load resistance under 300 Ω)
Cable for gas detector head [※]	Dedicated cable for remote(3, 5, 10 or 20 m)
Power supply [※]	100 - 120VAC $\pm 10\%$ (50/60Hz) or 24VDC $\pm 10\%$
Power consumption	AC specification:Max. 6VA/DC specification:Max. 4W
Initial clear	Approx. 25 seconds
Warming-up time	Approx. 30 minutes
Operating temperatures	0 - 40°C(at a constant condition)
Operating humidities	Below 90%RH(Non-condensing)
Structure [※]	Wall mounting type, sensor integrated type or remote type
Outline dimensions	Main unit: Approx. 80(W)x120(H)x 35.5(D)mm Remote sensor: Approx. 40(W)x96(H)x35.5(D)mm(projection portions excluded)
Weight	AC specification: Approx. 200g DC specification: Approx. 180g Remote sensor part: Approx. 55g(cable excluded)

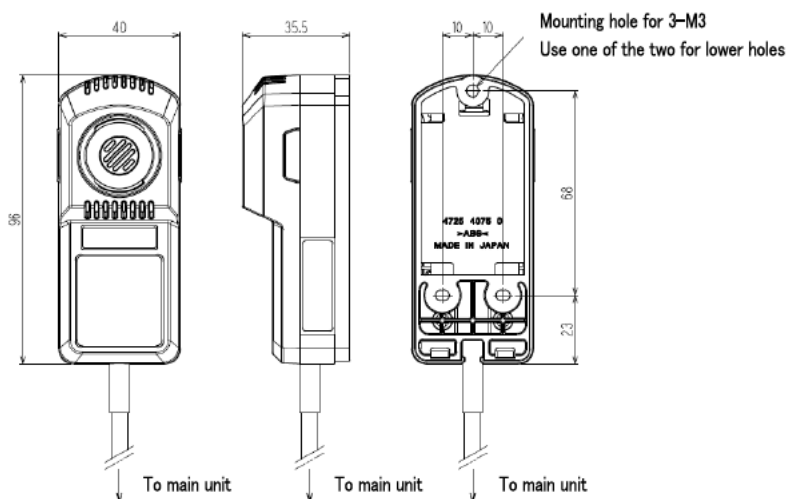
※ Please specify your request when ordering.

Outline Drawings

<Main body>

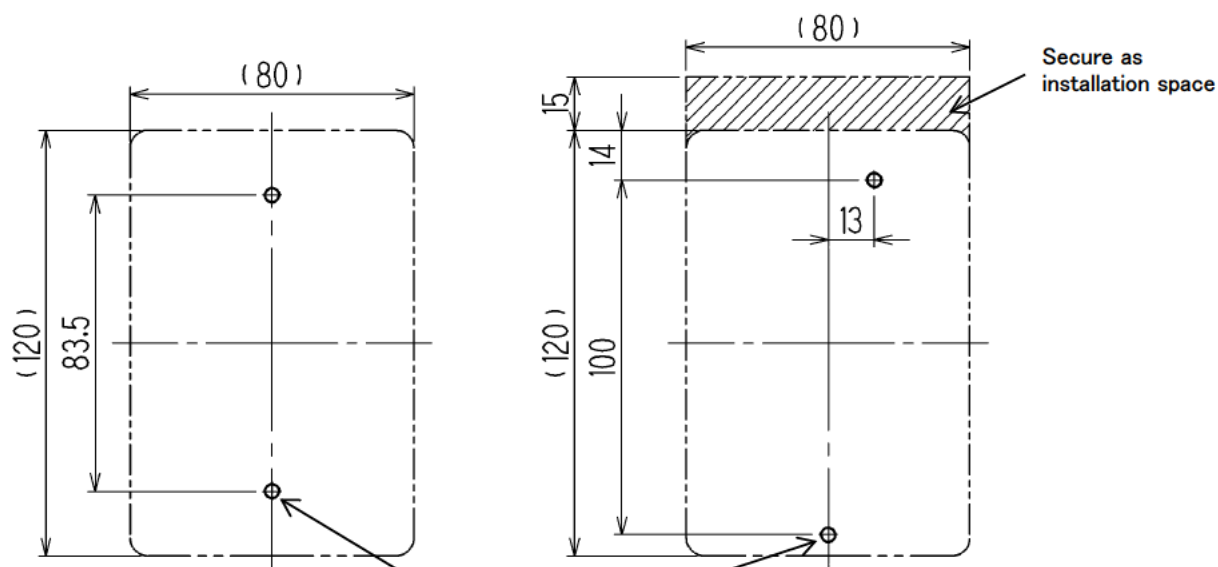


<Remote sensor>



Remote sensor

Installation dimension drawing



Mounting hole for 2-M4

Terminal Drawings

